

# ENDOINSPECT®

A HIGH PERFORMANCE LUMEN INSPECTION SYSTEM

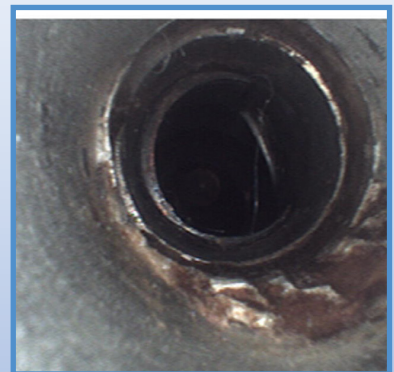
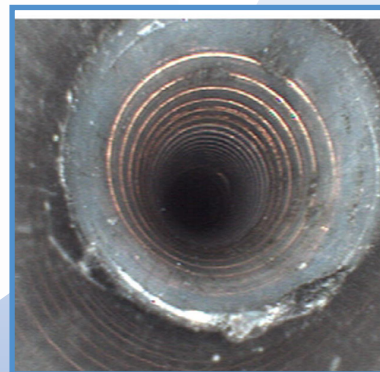
The EndoInspect® system is the most versatile, high resolution and easy to use lumen inspection scope-product in the industry.

## Scope Diameters

- .8 mm

- 1.0 mm

- 1.9 mm



The EndoInspect® system is designed for use by Sterile Processing Department / Central Service Technicians to enable the visual inspection of medical device lumens and working channels during reprocessing.

Our system aids in the visual detection of lumen damage, bioburden deposits, water moisture, reprocessing tool debris, rust / staining and other common lumen contaminants.



ENDOPROCESS®

[www.endoprocess.com](http://www.endoprocess.com) | [info@endoprocess.com](mailto:info@endoprocess.com)

## EndoInspect® Lumen Inspection Videoscope System Features:

- Clear, Bright Videoscopes w/ 13" Touch Screen Monitor
- Smallest Diameter / Longest Length Scopes Available
- Automatic Brightness and White Balance Features
- IP65 Rated Monitor System- Safe for Use in Wet Environments
- IP68 Rated Scope Products- Sealed for Submersion During HLD
- Plug-n-Play System / No Computer Required to Record Image



## EndoInspect® Monitor:

- 13" Capacitive touch screen video display
- On screen touch keyboard for image & video annotation
- No computer or software needed to save images & videos
- All scope models are common to one monitor system
- Simple image & video capture to removable USB storage
- IP65 rating / safe for use in decontamination & wet environments
- Intuitive file organization w/ image & video file review
- Adjustable, flex-n-stay scope holder system
- Integrated 100 mm VESA mount system
- Table top stand & wall arm mount systems available



## EndoInspect® Scopes:

- High resolution CMOS videoscopes in 1.0 and 1.9mm dia.
- Industry's smallest micro-fiberscopes in .8 mm dia.
- Scope lengths up to 1900 mm for single pass inspections
- IP68 rating for full submersion during HLD / soak sterilization
- All scope models are common to one monitor system
- Ergonomic, light weight scope body design w/ cap
- Each scope model diameter clearly marked for quick user ID
- Push button image & video capture to removable USB storage
- Automatic white balance feature
- Automatic scope LED light adjustment feature
- Automatic, motion detected LED "sleep mode" feature

